



# Fittings, Valves and Tubing

est. 1947

# DUFF<sup>CO.</sup>

**When you need it now... or don't know how**

PLUMBING & HEATING • PUMPS • WATER CONDITIONING  
MULTIFAMILY HOUSING SUPPLIES



CATALOG

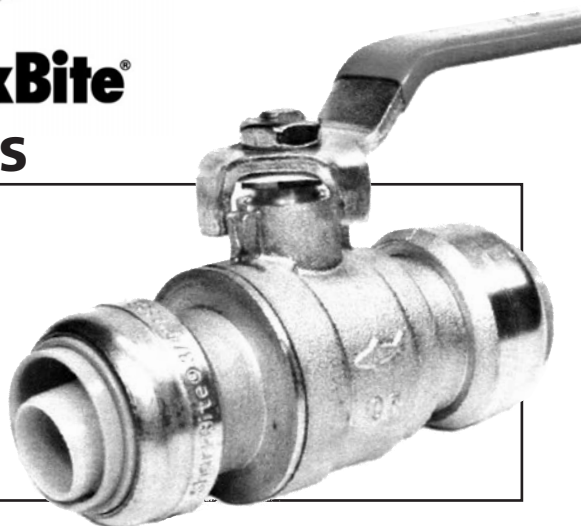
610-275-4453

[duffcompany.com](http://duffcompany.com)



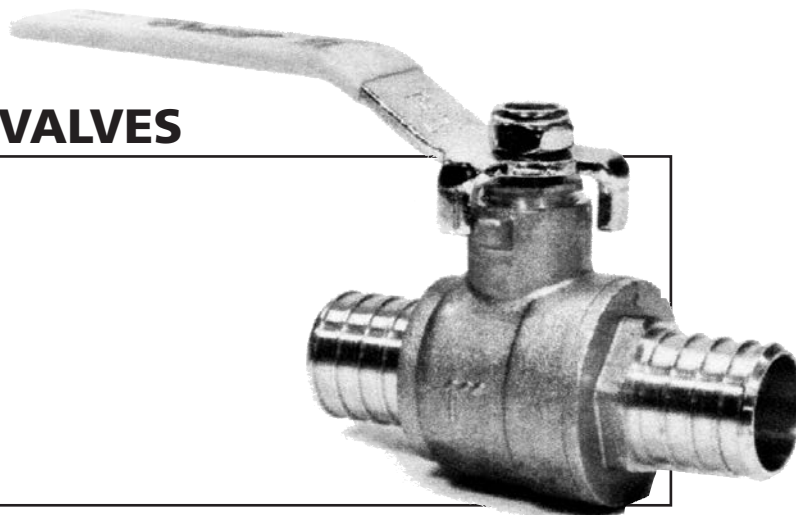
## SHARKBITE BALL VALVES

SIZE	FIG NO.
1/2"	197275
3/4"	197276
1"	220616



## PEX INSERT BALL VALVES

SIZE	FIG NO.
3/8"	172824
1/2"	172827
3/4"	172828
1"	172829



## PRESS BALL VALVES

SIZE	FIG NO.
1/2"	252857
3/4"	252858
1"	252859
1-1/4"	252860
1-1/2"	252861
2"	252862



Call for additional available sizes and manufacturers



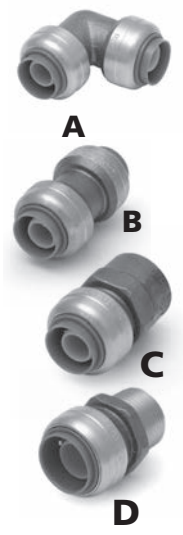
# SHARKBITE FITTINGS

SharkBite Push-Fit fittings are perfect when you can't solder a joint — and, they're easier to use! They work with PEX, CPVC and copper tubing.

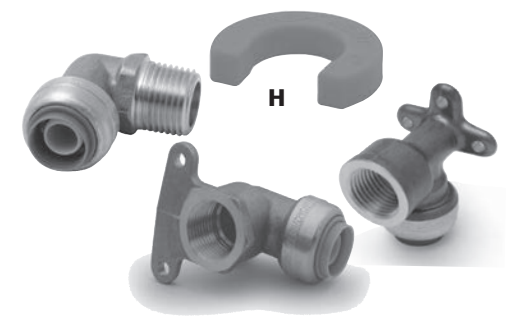
90S		A		COUPLINGS B		FEMALE ADAPTERS C		CTS MALE ADAPTERS D	
SIZE	FIG NO	SIZE	FIG NO	SIZE	FIG NO	SIZE	FIG NO	SIZE	FIG NO
1/2"	173436	1/2"	171062	1/2"	171065	1/2"	171065	1/2"	171067
3/4"	173437	3/4"	171063	1/2" CTS x 3/4 FPT	212772	1/2" CTS x 3/4" MPT	212772	1/2" CTS x 3/4" MPT	212773
1/2" x 3/4"	212774	3/4" x 1/2"	171064	3/4"	171066	3/4"	171066	3/4"	171068
1"	182518	1"	182511	1"	182514	1"	182514	1"	182516
		1" x 3/4"	182513						

TEES E		CAPS F		BALL VALVES G		SPECIALTY ITEMS H	
SIZE	FIG NO.	SIZE	FIG NO	SIZE	FIG NO.	SIZE	FIG NO
1/2"	173433	1/2"	172677	1/2"	197275	1/2" CTS x FPT 90 EL	212775
3/4"	173434	3/4"	127678	3/4"	197276	1/2" CTS x FPT Drop ear EL	212779
1/2" x 3/4"	173435	1"	182523	1"	220616	3/4" CTS x FPT Drop ear EL	212782
1"	182520					1/2" CTS x FPT EL	212782
1" x 3/4"	182522					1/2" CTS x MPT 90 EL	212776
						1/2" disconnect tool	171072
						3/4" disconnect tool	171073



FLEXIBLE SHARKBITE WATER HEATER CONNECTORS		
SIZE		TITFIG NO
1/2" SB X 3/4" FPT X 12"		212783
1/2" SB X 3/4" FPT X 24"		277056
1/2" SB X 3/4" FPT X 15"		274634
1/2" SB X 3/4" FPT X 18"		260344
3/4" SB X 3/4" FPT X 12"		307810
3/4" SB X 3/4" FPT X 15"		225104
3/4" SB X 3/4" FPT X 18"		260346
3/4" SB X 3/4" FPT X 24"		307811



## PEX PIPE & FITTINGS

3/8" PEX TUBING			1/2" PEX TUBING			3/4" PEX TUBING			1" PEX TUBING		
100'	RED	172755	100'	RED	172748	100'	RED	172750	100'	RED	20842
100'	BLUE	172747	100'	BLUE	172756	100'	BLUE	172757	100'	BLUE	20841
100'	WHITE	219884	100'	WHITE	172743	100'	WHITE	172744	100'	WHITE	17271
500'	RED	185496	300'	RED	178654	500'	RED	172749			
500'	BLUE	185495	300'	BLUE	178653	500'	RED	172749			
500'	RED/BLUE	172746	300'	RED/BLUE	172754						
			20'	RED	50231	20'	RED	207672			
			20'	BLUE	130825	20'	BLUE	176663			
			20'	WHITE	226736	20'	WHITE	190937			
			20'	RED HEAT	258821	20'	RED HEAT	210355			
			300'	RED HEAT	111466	300'	RED HEAT	187799			



90°		COUPLING		TEE		REDUCERS		PLUGS		MALE ADAPTERS		FEMALE ADAPTERS	
SIZE	FIG NO	SIZE	FIG NO	SIZE	FIG NO	SIZE	FIG NO	SIZE	FIG NO	SIZE	FIG NO	SIZE	FIG NO
3/8"	183549	3/8"	172773	3/8"	172761	—	—	3/8"	172805	3/8"x1/2"	172782		
1/2"	172770	1/2"	172774	1/2"	172773	1/2" X 3/8"	172296	1/2"	172810	3/8"	177781	1/2"	172792
3/4"	172771	3/4"	172775	3/4"	172767	3/4" x 1/2"	192001	3/4"	172807	1/2"	172802	3/4"	172795
1"	172772	1"	172776	1"	172769	1" x 3/4"	266341	3/4"	172803	1"	172804	1"	172793
3/4" plastic	246836	3/4" plastic	246840	3/4" plastic	246838					3/4" x 1"	180719	3/4" Pex	246836
1" plastic	246836	1" plastic	246841	1" plastic	246839							3/4" Pex	172795

For additional information call: 610-275-4453 or Fax: 610-279-6299  
Please call for current prices.

## PEX PIPE & FITTINGS

SWEAT MALE		SWEAT FEMALE		REDUCING TEES		LAVATORY CONNECTORS		TOILET CONNECTORS		SHOWER CONNECTORS	
SIZE	FIG NO	SIZE	FIG NO	SIZE	FIG NO	SIZE	FIG NO	SIZE	FIG NO	SIZE	FIG NO
—	—	—	—	1/2" X 3/4"	172764	3/8"	172817	3/8"	211617	1/2"	172789
1/2"	172784	1/2"	181311	3/4" X 1/2" X 1/2"	196794						
3/4"	172785	3/4"	17278	3/4" X 1/2" X 3/4"	172765						
1"	172787	1"	17278	3/4" X 1/2"	172766						
				1" X 3/4"	172768						

STUBOUT		STUBOUT W/FLG		BALL VALVES		SHUTOFF VALVES		CRIMP RINGS		J CLAMPS		C" CLAMP S/S		FLAT SUSP CLAMPS	
SIZE	FIG NO	SIZE	FIG NO	SIZE	FIG NO	SIZE	FIG NO	SIZE	FIG NO	SIZE	FIG NO	SIZE	FIG NO	SIZE	FIG NO
3/8" X 1/2"	172808	3/8" X 1/2"	207563	3/8"	172824	3/8" STRT	188492	3/8"	172777	3/8"	172836	—	—	—	—
1/2"	172814	1/2"	207561	1/2"	172827	3/8" ANG	188494	1/2"	172778	1/2"	172837	1/2"	224562	1/2"	255540
				3/4"	172828	1/2" X 3/8" STRT	188493	3/4"	172779	3/4"	172838	3/4"	224563	—	—
				1"	172829	1/2" X 3/8" ANG	188495	1"	172780	1"	172840	1"	224564	—	—

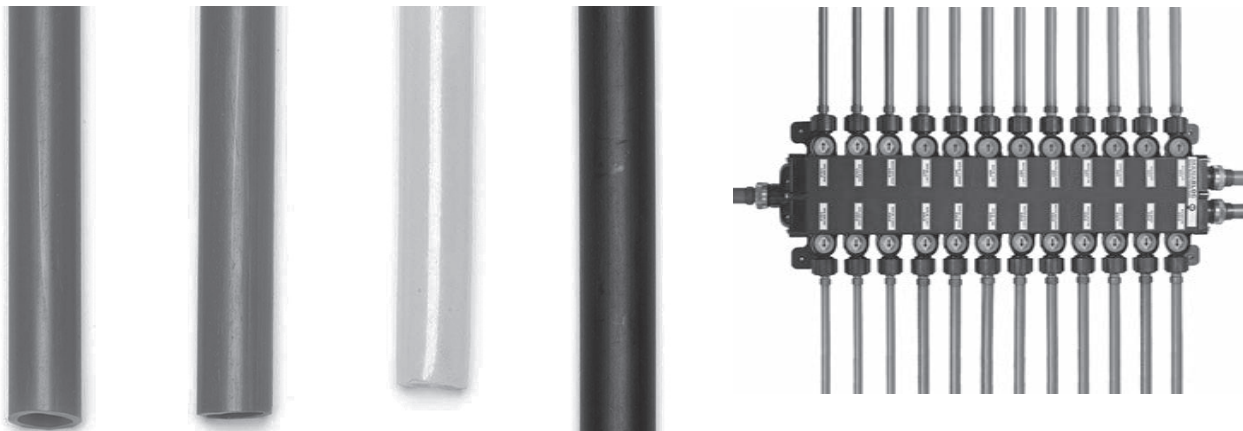
SUSP CLAMP		SNAP CLIP		PEX MALE 90s		DROP EAR 90		PEX MALE SWEAT 90		PEX FEMALE SWEAT 90		ESCUTCHEON SLEEVES	
SIZE	FIG NO	SIZE	FIG NO	SIZE	FIG NO	SIZE	FIG NO	SIZE	FIG NO	SIZE	FIG NO	SIZE	FIG NO
	—	—	—	3/8"	221695	—	—	3/8" x 1/2"	182755	3/8" x 1/2"	—	3" Sleeve 3/8"	173351
1/2"	63625	1/2"	224569	1/2"	43335	1/2"	172790	1/2"	182789	1/2"	209167	3/8" Esc White	172844
3/4"	47131	3/4"	224570	1/2" x 3/8"	43334	3/4"	261120	3/4" x 1/2"	165282	3/4"	201766	—	—
	—	1"	224571	1/2" x 3/4"	43336	—	—	3/4" x 1/2"	165281	—	—	—	—
				3/4"	43337								
				3/4" x 1"	43338								

### WHY PEX?

PEX is easier to install than copper; it's like running a garden hose. PEX won't corrode like copper in acidic environments. Even if you install PEX in a conventional main line and branch system, the connections are quicker to make than soldering copper.

PEX CRIMPER TOOLS		MANIFOLDS		MANIFOLD ADAPTERS	
TOOL	FIG NO	SIZE	FIG NO	SIZE	FIG NO
3/8"	172831	14 PORT 3/8"	172715	3/8" PORT X 1/2" INSERT	172729
1/2"	130015	18 PORT 3/8"	172718	1/2" PORT X 3/8" INSERT	172728
3/4"	130016	24 PORT (18)3/8" - (6)1/2"	172720	3/8" PORT CAP	172730
1"	172830	30 PORT (22) 3/8" - (8)1/2"	172726	1/2" PORT CAP	172731
1/2'-3/4" Combo	172834	36 PORT (26) 3/8" - (10)1/2"	172723	1/2" PORT X 1/2" INSERT	206504
1/2" Compact Angle	210004	5 PORT 1/2"	20229	3/4" BLOCK X 3/4" INSERT	172734
		18 PORT 1/2"	229014	3/4" BLOCK X 3/4" MIP	172735
		24 PORT 1/2"	207675	1" BLOCK CAP	172736
		30 PORT 1/2"	229013		
		36 PORT 1/2"	188431		

*Manifolds simplify plumbing runs and reduce leaks by eliminating the need for many tees and fittings between the main supply line and the fixture.*



COPPER WATER TUBE

NOM. SIZE	HARD TUBING (20' LENGTH)							
	TYPE M		TYPE L		TYPE K		DWV	
	FIG.	PRICE	FIG.	PRICE	FIG.	PRICE	FIG.	PRICE
1/8	-	-	-	-	-	-	-	-
1/4	-	-	7504	-	7515	-	-	-
3/8	7513	-	1661	-	7516	-	-	-
1/2	1671	-	1662	-	7518	-	-	-
3/4	1672	-	1663	-	7521	-	-	-
1	1673	-	1664	-	7522	-	-	-
1 1/4	1674	-	1665	-	7524	-	7538	-
1 1/2	1675	-	1666	-	7525	-	1680	-
2	1676	-	1667	-	7528	-	1681	-
2 1/2	1677	-	1668	-	7531	-	-	-
3	1678	-	1669	-	7534	-	1682	-
4	1679	-	1670	-	7536	-	1683	-
5	-	-	7510	-	-	-	-	-
6	-	-	7512	-	-	-	-	-
8	-	-	63826	-	-	-	-	-

10' LENGTH		
1/2	7545	7541
3/4	7552	7543

SOFT TUBING					
NOM. SIZE	LENGTH	TYPE L		TYPE K	
		FIG.	PRICE	FIG.	PRICE
1/4	30	7556	-	7567	-
	60	1684	-	7565	-
3/8	30	7557	-	7572	-
	60	1685	-	1689	-
1/2	30	7558	-	7574	-
	60	1686	-	1690	-
3/4	100	5840	-	-	-
	30	7559	-	7576	-
	60	1687	-	1691	-
1	100	5841	-	19783	-
	30	7561	-	7578	-
	60	1688	-	1692	-
1 1/4	100	5842	-	18987	-
	60	-	-	1693	-
	60	38575	-	1694	-
2	40	-	-	1695	-

ACTUAL OUTSIDE DIAMETERS OF TUBING

1/8" 3/16" 1/4" 5/16" 3/8" 1/2" 5/8" 3/4" 7/8" 1"



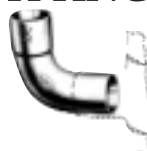
REFRIGERATION TUBING

SIZE OD	COILS (Soft) 50'		LENGTHS (Hard) 20'	
	FIG.	PRICE	FIG.	PRICE
1/8	5838	-	-	-
3/16	7579	-	-	-
1/4	1696	-	-	-
5/16	7581	-	-	-
3/8	5839	-	7590	-
1/2	7583	-	7592	-
5/8	7585	-	7593	-
3/4	7587	-	7660	-
7/8	7588	-	7661	-
1 1/8	-	-	7662	-
1 3/8	-	-	7663	-
1 5/8	-	-	7664	-

BRASS PIPE (12' LENGTH)

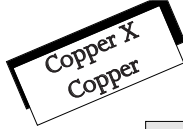
Size	Fig No	Price
1/8	21146	-
1/4	7665	-
3/8	7666	-
1/2	7667	-
3/4	7668	-
1	7672	-
1 1/4	7673	-
1 1/2	7674	-
2	7675	-
3	7677	-

## COPPER FITTINGS



SIZE	90° Elbow CXC		45° Elbow CXC		90° Elbow Ftg X C		45° Elbow Ftg X C		90° LR Elbow C X C	
	Fig No	Price	Fig No	Price	Fig No	Price	Fig No	Price	Fig No	Price
1/8	13995		14005		14002		-		-	
1/4	1697		14006		14003		14009		26415	
3/8	1698		1754		1744		1764		26417	
3/8 X 1/4	5801		-		-		-		-	
1/2	1699		1755		1745		1765		26419	
1/2 X 1/4	13997		-		-		-		-	
1/2 X 3/8	1708		-		-		-		-	
5/8	13996		14007		14004		14010		26421	
5/8 x 1/2	40046		-		-		-		-	
5/8 x 3/4	40045		-		-		-		-	
3/4	1700		1756		1746		1766		26422	
3/4 X 3/8	36779		-		-		-		-	
3/4 X 1/2	1709		-		-		-		-	
7/8	-		-		-		-		35949	
1	1701		1757		1747		1767		26424	
1 x 3/8	36780		-		-		-		-	
1 X 1/2	1710		-		-		-		-	
1 X 3/4	1711		-		-		-		-	
1 1/4	1702		1758		1748		1768		26426	
1 1/4 X 1/2	1712		-		-		-		-	
1 1/4 X 3/4	1713		-		-		-		-	
1 1/4 X 1	1714		-		-		-		-	
1 1/2	1703		1759		1749		1769		26427	
1 1/2 x 1/2	1715		-		-		-		-	
1 1/2 x 3/4	1716		-		-		-		-	
1 1/2 x 1	1717		-		-		-		-	
1 1/2 x 1	1718		-		-		-		-	
1/4	1704		1760		1750		1770		26429	
2	1719		-		-		-		-	
2 x 3/4	1720		-		-		-		-	
2 x 1	5802		-		-		-		-	
2 x 1 1/4	1721		-		-		-		-	
2 x 1 1/2	1705		1761		1751		1771		26431	
2 1/2	35938		-		-		-		-	
2 1/2 x 1	35937		-		-		-		-	
1/4	33423		-		-		-		25701	
2 1/2 x 1	1706		1762		1752		1772		33440	
1/2	35939		-		-		-		25704	
2 1/2 x 2	1707		1763		1753		5849		-	
3	33420		33403		-		-		-	
3 1/2	33421		33404		-		-		-	
4	33422		33406		-		-		-	

**DUFFTIP** • Don't forget to order sandcloth, fitting brushes, flux and solder with copper fittings!



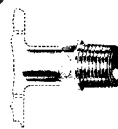
COPPER FITTINGS

Coupling w/ Stop		Coupling Without Stop		
SIZE	FIG. NO.	PRICE	FIG. NO.	PRICE
1/8	14147		33388	
1/4	1914		5805	-
1/4 x 1/8	14148		-	-
3/8	1915		1904	-
3/8 x 1/8	26398		-	-
3/8 x 1/4	1925		-	-
1/2	-		1905	-
1/2 x 1/4	1926		-	-
1/2 x 3/8	1927		-	-
5/8	14104		35894	-
5/8 x 1/4	35886		-	-
5/8 x 3/8	35885		-	-
5/8 x 1/2	14105		-	-
3/4	-		1906	-
3/4 x 3/8	14149		-	-
3/4 X 1/2	1928		-	-
3/4 x 5/8	14106		-	-
1	1918		1907	-
1 x 3/8	14150		-	-
1 x 1/2	1929		-	-
1 x 5/8	35888		-	-
1 x 3/4	1930		-	-
1 1/4	1919		1908	-
1 1/4 x 1/2	1931		-	-
1 1/4 x 5/8	35889		-	-
1 1/4 x 3/4	1932		-	-
1 1/4 x 1	1933		-	-
1 1/2	1920		1909	-
1 1/2 x 1/2	1934		-	-
1 1/2 x 3/4	1935		-	-
1 1/2 x 1	1936		-	-
1 1/2 x 1 1/4	1937		-	-
2	1921		1910	-
2 x 1/2	1938		-	-
2 x 3/4	1939		-	-
2 x 1	1940		-	-
2 x 1 1/4	1941		-	-
2 1/2	1922		1911	-
2 1/2 x 1	22899		-	-
2 1/2 x 1 1/4	1943		-	-
2 1/2 x 1 1/2	1944		-	-
2 1/2 x 2	1945		-	-
3	1923		1912	-
3 x 1	20599		-	-
3 x 1 1/4	23688		-	-
3 x 1/12	1946		-	-
3 x 2	1947		-	-
3 x 2 1/2	1948		-	-
3 1/2	35890		-	-
3 1/2 x 3	35891		-	-
4	1924		1913	-
4 x 2	1949		-	-
4 x 2 1/2	1950		-	-
4 x 3	1951		-	-
4 x 3 1/2	33381		-	-
5	33377		33389	-
5 x 3	33383		-	-
5 x 4	33382		-	-
6	33378		33390	-
6 x 2	33387		-	-
6 x3	33386		-	-
6 x 4	33385		-	-
6 x 5	33384		-	-



Adapter CXM		Adapter CXF		
SIZE	FIG. NO.	PRICE	FIG. NO.	PRICE
1/8	33359		30914	
1/8 X 1/4	-		24003	
1/4	2020		19634	
1/4 X 3/8	26446		35904	
1/4 X 1/2	26445		35903	
3/8	2021		1998	
3/8 X 1/4	25798		14065	
3/8 X 1/2	26449		26399	
3/8 X 3/4	26448		-	
3/8 X 1	26447		-	
1/2	2022		1999	
1/2 X 1/4	2031		2008	
1/2 X 3/8	2032		2009	
1/2 X 3/4	2033		2010	
1/2 X 1	2034		35905	
5/8 X 1/2	35917		35907	
5/8 X 3/4	35902		35906	
3/4	2023		2000	
3/4 X 3/8	19646		20168	
3/4 X 1/2	2035		2011	
3/4 X 1	2036		2012	
3/4 X 1 1/4	2037		2013	
3/4 X 1 1/2	26450		-	
1	2024		2001	
1 X 1/2	2038		2014	
1 X 3/4	2039		2015	
1 X 1 1/4	2040		2016	
1 X 1 1/2	2041		26400	
1 X 2	14071		-	
1 1/4	2025		2002	
1 1/4 X 1/2	-		35910	
1 1/4 X 3/4	21417		35908	
1 1/4 X 1	2042		2017	
1 1/4X11/2	2043		2018	
1 1/4 X 2	14072		20457	
1 1/2	2026		2003	
1 1/2 X 3/4	20645		14066	
1 1/2 X 1	2044		14067	
1 1/2X11/4	2045		2019	
1 1/2 X 2	2046		14068	
2	2027		2004	
2 X 1	14073		-	
2 X 1 1/4	14074		23003	
2 X 1 1/2	33363		14069	
2 X 2 1/2	2047		-	
2 1/2	2028		2005	
2 1/2 X 2	14172		-	
3	2029		2006	
4	2030		2007	
5	33361		-	
6	33362		-	

## COPPER FITTINGS



Fitting Reducer Ftg X C			Flush Bushing Ftg X C		Fitting Adapter Ftg X M		Fitting Adapter Ftg X F	
SIZE	FIG. NO.	PRICE	FIG. NO.	PRICE	FIG. NO.	PRICE	FIG. NO.	PRICE
1/8	-	-	-	-	33364	-	33349	-
1/4	-	-	-	-	33365	-	33351	-
1/4 x 1/8	14029	-	35969	-	-	-	-	-
3/8	-	-	-	-	33366	-	2050	-
3/8 x 1/4	14030	-	5806	-	-	-	-	-
1/2	-	-	-	-	2048	-	2051	-
1/2 x 1/4	14031	-	5808	-	-	-	33355	-
1/2 x 3/8	14032	-	5807	-	33370	-	33353	-
1/2 x 3/4	-	-	-	-	33369	-	33354	-
3/4	-	-	-	-	2049	-	2052	-
3/4 x 1/4	14033	-	-	-	-	-	-	-
3/4 x 3/8	14034	-	1965	-	-	-	-	-
3/4 x 1/2	17753	-	1964	-	33372	-	14076	-
3/4 x 5/8	35900	-	-	-	-	-	-	-
1	-	-	-	-	5812	-	2053	-
1 x 3/8	26405	-	-	-	-	-	-	-
1 x 1/2	14035	-	1966	-	-	-	-	-
1 x 5/8	35901	-	-	-	-	-	-	-
1 x 3/4	14036	-	1967	-	33373	-	35911	-
1 1/4	-	-	-	-	5813	-	2054	-
1 1/4 x 1/2	14037	-	-	-	-	-	-	-
1 1/4 x 3/4	14038	-	-	-	-	-	-	-
1 1/4 x 1	14040	-	1970	-	-	-	-	-
1 1/2	-	-	-	-	5814	-	2055	-
1 1/2 x 1/2	14041	-	-	-	-	-	-	-
1 1/2 x 3/4	14042	-	-	-	-	-	-	-
1 1/2 x 1	14043	-	-	-	-	-	-	-
1 1/2 x 1 1/4	14044	-	1974	-	-	-	-	-
2	-	-	-	-	5815	-	2056	-
2 x 1/2	14045	-	-	-	-	-	-	-
2 x 3/4	14046	-	-	-	-	-	-	-
2 x 1	14047	-	-	-	-	-	-	-
2 x 1 1/4	14048	-	-	-	-	-	-	-
2 x 1 1/2	14049	-	1978	-	-	-	-	-
2 1/2	-	-	-	-	24131	-	35913	-
2 1/2 x 1	26407	-	-	-	-	-	-	-
2 1/2 x 1 1/4	14050	-	-	-	-	-	-	-
2 1/2 x 1 1/2	14051	-	-	-	-	-	-	-
2 1/2 x 2	14052	-	-	-	-	-	-	-
3	-	-	-	-	26401	-	35914	-
3x1	20260	-	-	-	-	-	-	-
3 x 1 1/4	14053	-	-	-	-	-	-	-
3 x 1 1/2	14054	-	-	-	-	-	-	-
3 x 2	14055	-	-	-	-	-	-	-
3 x 2 1/2	14056	-	-	-	-	-	-	-
3 1/2 x 3	33528	-	-	-	-	-	-	-
4 x 2	20081	-	-	-	-	-	-	-
4 x 2 1/2	14057	-	-	-	-	-	-	-
4 x 3	14058	-	-	-	-	-	-	-
4 x 3 1/2	33529	-	-	-	-	-	-	-
5 x 2	26410	-	-	-	-	-	-	-
5 x 3	26409	-	-	-	-	-	-	-
5 x 4	26408	-	-	-	-	-	-	-
6 x 3	26413	-	-	-	-	-	-	-
6 x 4	26412	-	-	-	-	-	-	-
6 x 5	26411	-	-	-	-	-	-	-

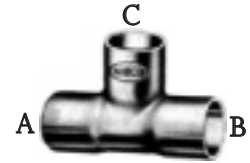
  

Flush Bushing Ftg X F			Crossover C X C	
SIZE	FIG. NO.	PRICE	FIG. NO.	PRICE
1/2	-	-	14199	-
1/2 x 1/8	1963	-	-	-
1/2 x 1/4	17681	-	-	-
3/4	-	-	14203	-
3/4 x 1/8	18965	-	-	-
3/4 x 1/4	-	-	-	-
3/4 x 3/8	18967	-	-	-
3/4 x 1/2	18969	-	-	-
1 x 1/2	19426	-	-	-
1 x 3/4	19425	-	-	-
1 1/4 x 3/4	35972	-	-	-
1 1/2 x 1	35973	-	-	-





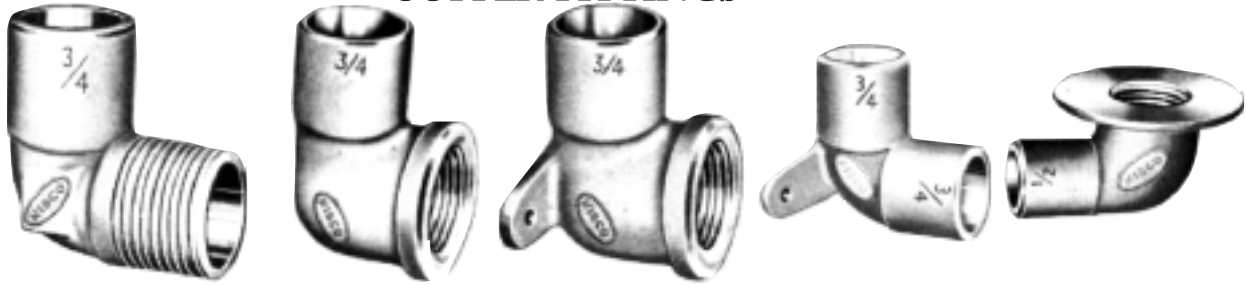
COPPER TEES CXCXC



SIZE			Fig No	Price
A	B	C		
1/8	1/8	1/8	14011	
1/4	1/4	1/4	1773	
3/8	3/8	3/8	1774	
3/8	3/8	1/8	14013	
3/8	3/8	1/4	1784	
3/8	3/8	1/2	14014	
1/2	1/2	1/2	1775	
1/2	1/2	1/4	33555	
1/2	1/2	3/8	1785	
1/2	1/2	3/4	1786	
1/2	1/2	1	33553	
5/8	5/8	5/8	14012	
3/4	3/4	3/4	1776	
3/4	3/4	1/4	22929	
3/4	3/4	3/8	18119	
3/4	3/4	1/2	1787	
3/4	3/4	1	1790	
3/4	1/2	1/2	1788	
3/4	1/2	3/4	1789	
7/8	7/8	7/8	35963	
1	1	1	1777	
1	1	1/4	33579	
1	1	3/8	18120	
1	1	1/2	1791	
1	1/2	1/2	1792	
1	1/2	3/4	1793	
1	1/2	1	1794	
1	1	5/8	33578	
1	1	3/4	1795	
1	3/4	1/2	1796	
1	3/4	3/4	1797	
1	3/4	1	1798	
1	3/4	1 1/4	40044	
1	1	1 1/4	33577	
1	1	1 1/2	33576	
1 1/4	1 1/4	1 1/4	1778	
1 1/4	1 1/4	3/8	33582	
1 1/4	1 1/4	3/4	1801	
1 1/4	1/2	1/2	33584	
1 1/4	1/2	3/4	1802	
1 1/4	1/2	1	1803	
1 1/4	1/2	1 1/4	22222	
1 1/4	1 1/4	3/4	1804	
1 1/4	3/4	1/2	33583	
1 1/4	3/4	3/4	1805	
1 1/4	3/4	1	1806	
1 1/4	3/4	1 1/4	1807	
1 1/4	1 1/4	1	1808	
1 1/4	1	1/2	1809	
1 1/4	1	3/4	1810	
1 1/4	1	1	1811	
1 1/4	1	1 1/4	1812	
1 1/4	1 1/4	1 1/2	27957	
1 1/2	1 1/2	1 1/2	1779	
1 1/2	1 1/2	1/2	1813	
1 1/2	1/2	1	33592	
1 1/2	1/2	1 1/4	33591	
1 1/2	1/2	1 1/2	1814	
1 1/2	1 1/2	3/8	40043	
1 1/2	1 1/2	3/4	1815	
1 1/2	3/4	1/2	33590	
1 1/2	3/4	3/4	1816	
1 1/2	3/4	1	33589	
1 1/2	3/4	1 1/4	22293	
1 1/2	3/4	1 1/2	1817	
1 1/2	1 1/2	1	1818	
1 1/2	1	1/2	33588	
1 1/2	1	3/4	1819	
1 1/2	1	1	1820	
1 1/2	1	1 1/4	1821	
1 1/2	1	1 1/2	1822	
1 1/2	1 1/2	1 1/4	1823	
1 1/2	1 1/4	1/2	33587	
1 1/2	1 1/4	3/4	1824	
1 1/2	1 1/4	1	1825	
1 1/2	1 1/4	1 1/4	1826	
1 1/2	1 1/4	1 1/2	1827	
1 1/2	1 1/2	2	33586	
1 1/2	1 1/2	2 1/2	33585	

SIZE			Fig No	Price
A	B	C		
2	2	2	1780	
2	2	1/2	1828	
2	1/2	2	1829	
2	2	3/4	1830	
2	3/4	2	1831	
2	2	1	1832	
2	1	1	21399	
2	1	2	1834	
2	2	1 1/4	1835	
2	2	1 1/2	1838	
2	1 1/2	1	1840	
2	1 1/2	1 1/4	1841	
2	1 1/2	1 1/2	1842	
2	1 1/2	2	1843	
2	2	1 1/2	33594	
2	2	3	33593	
2 1/2	2 1/2	2 1/2	1781	
2 1/2	2 1/2	1/2	1844	
2 1/2	1/2	2 1/2	1853	
2 1/2	2 1/2	3/4	1845	
2 1/2	3/4	2 1/2	1854	
2 1/2	2 1/2	1	1846	
2 1/2	1	2 1/2	1855	
2 1/2	2 1/2	1 1/4	1847	
2 1/2	1 1/4	2 1/2	1856	
2 1/2	2 1/2	1 1/2	1848	
2 1/2	1 1/2	1 1/2	33604	
2 1/2	1 1/2	2	33603	
2 1/2	1 1/2	3/4	1857	
2 1/2	2 1/2	2	1849	
2 1/2	2	1/2	33602	
2 1/2	2	3/4	33601	
2 1/2	2	1	1850	
2 1/2	2	1 1/4	1851	
2 1/2	2	1 1/2	1852	
2 1/2	2	2	25716	
2 1/2	2	2 1/2	1858	
3	3	3	1782	
3	3	1/2	1859	
3	3	3/4	1860	
3	3/4	3	30620	
3	3	1	1861	
3	1	3	33610	
3	3	1 1/4	1862	
3	1 1/4	3	33609	
3	3	1 1/2	1863	
3	1 1/2	3	33608	
3	3	2	1864	
3	2	2	1865	
3	2	2 1/2	33607	
3	2	3	1866	
3	3	2 1/2	1867	
3	2 1/2	3	33605	
3 1/2	3 1/2	3 1/2	35964	
4	4	4	1783	
4	4	1/2	23702	
4	4	3/4	20711	
4	4	1	23703	
4	4	1 1/4	23704	
4	4	1 1/2	23705	
4	4	2	1870	
4	2	2	25703	
4	2	4	33614	
4	4	2 1/2	1871	
4	2 1/2	4	33613	
4	4	3	1872	
4	3	2	33612	
4	3	2 1/2	1873	
4	3	3	33611	
4	3	4	32487	
5	5	5	33537	
6	6	6	33538	
8	8	8	33539	

## COPPER FITTINGS



90° Elbow CXM	90° Elbow CXF	90° Drop Elbow CXF	90° Drop Elbow CXC	90° Flanged Sink Elbow CXF
------------------	------------------	-----------------------	-----------------------	-------------------------------

Size	Fig No	Price	Fig No	Price	Fig No	Price	Fig No	Price	Fig No	Price
1/4	14017		26009		-		-		-	
3/8	14016		1722		33495		-		-	
3/8 X 1/4	26441		35955		-		-		-	
3/8 X 1/2	13998		1729		33501		-		-	
3/8 X 3/4	-		33493		-		-		-	
1/2	1733		1723		1742		1743		22118	
1/2 X 1/4	-		33489		-		-		-	
1/2 X 3/8	26442		1728		13999		-		-	
1/2 X 3/4	1740		1730		21273		-		-	
3/4	1734		1724		14000		33522		23700	
3/4 X 3/8	-		36499		-		-		-	
3/4 X 1/2	26444		1731		33502		-		-	
3/4 X 1	23621		22365		-		-		-	
3/4 X 1 1/4	-		33496		-		-		-	
1	1735		1725		-		-		-	
1 X 1/2	-		20574		-		-		-	
1 X 3/4	-		1732		-		-		-	
1 X 1 1/4	25159		33497		-		-		-	
1 1/4	1736		1726		-		-		-	
1 1/4 X 1/2	-		33500		-		-		-	
1 1/4 X 3/4	-		33499		-		-		-	
1 1/4 X 1	-		33498		-		-		-	
1 1/4 X 1 1/2	-		25788		-		-		-	
1 1/2	1737		1727		-		-		-	
2	1738		5848		-		-		-	



90° Street Elbow CXF



90° Fitting Elbow Ftg X F



45° Elbow CXF

**ALL AVAILABLE FOR  
QUICK DELIVERY!**



45° Elbow CXM

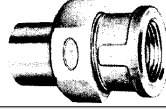
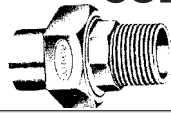


45° Fitting Elbow Ftg X M



45° Fitting Elbow Ftg x F

COPPER FITTINGS



	Union CXC		Union CXM		Union CXF		Fitting Plug		Cross CXCxCxC	
SIZE	FIG. NO.	PRICE	FIG. NO.	PRICE	FIG. NO.	PRICE	FIG. NO.	PRICE	FIG. NO.	PRICE
1/8	-	-	-	-	-	-	-	36781	-	-
1/4	14060	-	33671	-	-	-	-	36782	-	-
3/8	1989	-	14061	-	-	33669	-	14180	-	14222
1/2	1990	-	5809	-	-	8814	-	14182	-	14224
5/8	35974	-	-	-	-	-	-	-	-	-
3/4	1991	-	5810	-	-	1996	-	14185	-	14226
1	1992	-	5811	-	-	1997	-	14188	-	14228
1 1/4	1993	-	14062	-	-	23708	-	14190	-	14229
1 1/2	1994	-	14063	-	-	23709	-	14193	-	14231
2	1995	-	14064	-	-	23710	-	14195	-	14233
2 1/2	14175	-	23711	-	-	-	-	-	-	14235
3	14177	-	-	-	-	-	-	-	-	-
4	-	-	-	-	-	-	-	-	-	-



	90° Union Elbow CXC		90° Union Elbow CXM		90° Union Elbow CXF		90° Y CXCxCxC		45° Y CXCxCxC	
SIZE	FIG. NO.	PRICE	FIG. NO.	PRICE	FIG. NO.	PRICE	FIG. NO.	PRICE	FIG. NO.	PRICE
3/8	14089	-	-	-	-	-	-	-	-	-
1/2	14090	-	33518	-	33509	-	14026	-	14151	-
3/4	14091	-	33519	-	33511	-	1901	-	14152	-
1	14092	-	33520	-	33512	-	1902	-	14153	-
1 1/4	33525	-	-	-	-	-	5803	-	14154	-
1 1/2	-	-	-	-	-	-	20294	-	20295	-

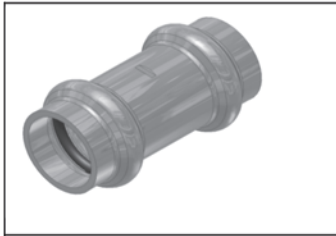


	Coupling with Drain CXC		Elbow with Drain CXC		Bulkhead CXC		Bulkhead CXM		Bulkhead CXF	
SIZE	FIG. NO.	PRICE	FIG. NO.	PRICE	FIG. NO.	PRICE	FIG. NO.	PRICE	FIG. NO.	PRICE
3/8	14156	-	-	-	-	-	-	-	33374	-
1/2	14157	-	14164	-	14083	-	14217	-	14209	-
3/4	14158	-	14166	-	14084	-	14218	-	14212	-
1	14159	-	14167	-	14085	-	14221	-	14214	-
1 1/4	14160	-	22530	-	-	-	-	-	-	-

For additional information call: 610-275-4453 or Fax: 610-279-6299  
Please call for current prices.

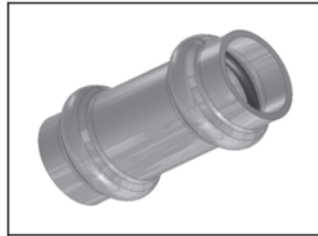
## COPPER PRESS FITTINGS

Believe it or not, press connections are less expensive than soldering when you consider man hours, solder, flux, etc.--even when you factor in the upfront cost of tools. Plus, you don't need a burn permit. Moreover, when you're repairing with press fittings, water can still be in the line!



**Couplings with Stop**

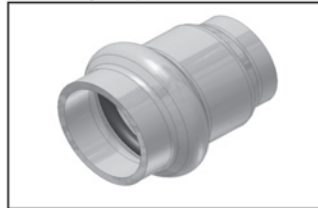
Size	Fig. No.
1/2	199218
3/4	199219
1	199221
1 1/4	199222
1 1/2	199223
2	199225
2 1/2	245382
3	245383
4	245384
3/4 X 1/2	199227
1 X 1/2	199229
1 X 3/4	199230
1 1/4 X 3/4	199231
1 1/4 X 1	199232
1 1/2 X 3/4	199233
1 1/2 X 1	199234
1 1/2 X 1 1/4	199235
2 X 3/4	199236
2 X 1	199237
2 X 1 1/2	199239
2 1/2 X 1	--
2 1/2 X 1 1/4	--
2 1/2 X 1 1/2	--
2 1/2 X 2	--
3 X 3/4	--
3 X 1 1/2	--
3 X 2	--
3 X 2 1/2	--
4 X 2	--
4 X 2 1/2	--
4 X 3	--



**Couplings without Stop (Slip)**

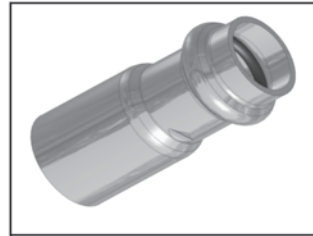
Size	Fig. No.
1/2	199242
3/4	199243
1	199244
1 1/4	199246
1 1/2	199247
2	199248
2 1/2	245385
3	--
4	245386
<b>Extended Length*</b>	
1/2	--
3/4	--
1	--

*\* Excellent for repair work!*



**Caps**

1/2	199379
3/4	199383
1	199385
1 1/4	199386
1 1/2	199387
2	199388
2 1/2	245409
3	245410
4	245411



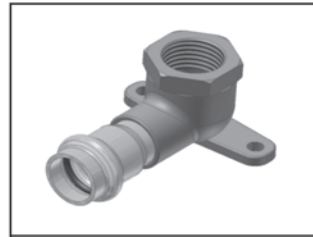
**Fitting Reducers**

Size (Fitting X )	Fig. No.
3/4 X 1/2	199195
1 X 1/2	199196
1 X 3/4	199197
1 1/4 X 3/4	199198
1 1/4 X 1	199199
1 1/2 X 1/2	199203
1 1/2 X 3/4	199204
1 1/2 X 1	199205
1 1/2 X 1 1/4	199208
2 X 1/2	199209
2 X 3/4	199211
2 X 1	199212
2 X 1 1/4	199216
2 X 1 1/2	199217
2 1/2 X 2	--
3 X 2 1/2	--
4 X 2 1/2	--
4 X 3	--



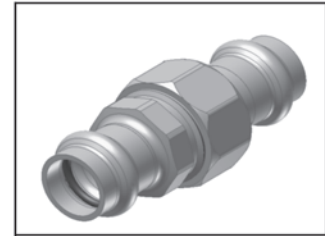
**Crossovers**

1/2 X 1/2	118769
3/4 X 3/4	118771



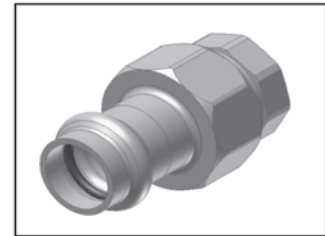
**90° Drop Ear Elbows (C X F)**

1/2 X 3/8	--
1/2	199412
3/4	199413

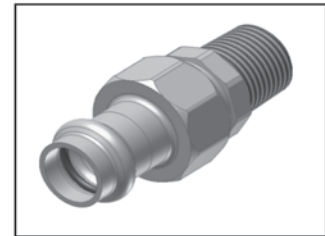


**Unions**

Size	Fig. No.
UNION 1/2	199453
UNION 3/4	199454
UNION 1	199455
UNION 1 1/4	199457
UNION 1 1/2	199459
UNION 2	199460

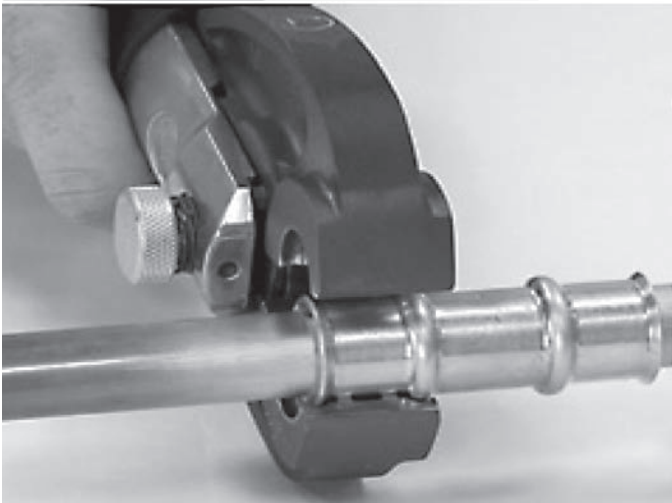


1/2	199462
3/4	199463
1	199464
1 1/4	199465
1 1/2	199466
2	199468



**C X Male Unions**

1/2	199469
3/4	199470
1	199471
1 1/4	199472
1 1/2	199473
2	199474



# DUFFNOTE:

Stainless Steel & Black Iron fittings available too!

COPPER PRESS FITTINGS



90° Elbows	
Size	Fig. No.
1/2	199308
3/4	199309
1	199310
1 1/4	199313
1 1/2	199314
2	199316
2 1/2	245399
3	245400
4	245402



45° Elbows	
Size	Fig. No.
1/2	199294
3/4	199296
1	199297
1 1/4	199298
1 1/2	199299
2	199300
2 1/2	245392
3	245393
4	245394



Tees	
Size	Fig. No.
1/2	199329
3/4	199334
1	199339
1 1/4	199348
1 1/2	199358
2	199377
2 1/2	245406
3	245407
4	245408

Reducing Tees*	
3/4 X 1/2 X 3/4	199336
3/4 X 3/4 X 1/2	199337
1 X 1/2 X 1	199340
1 X 3/4 X 1	199344
1 X 1 X 1/2	199345
1 X 1 X 3/4	199346
1 1/4 X 1 X 3/4	199349
1 1/4 X 1 X 1	199350
1 1/4 X 1 1/4 X 1/2	199355
1 1/4 X 1 1/4 X 3/4	199356
1 1/4 X 1 1/4 X 1	199357
1 1/2 X 1/2 X 1 1/2	199359
1 1/2 X 3/4 X 3/4	199364
1 1/2 X 1 X 3/4	199365
1 1/2 X 1 X 1	199366
1 1/2 X 1 X 1 1/2	199367
1 1/2 X 1 1/4 X 1	199368
1 1/2 X 1 1/4 X 1 1/4	199369
1 1/2 X 1 1/2 X 1/2	199370
1 1/2 X 1 1/2 X 3/4	199374
1 1/2 X 1 1/2 X 1	199375
1 1/2 X 1 1/2 X 1 1/4	199376
2 X 2 X 1	309969
2-1/2 X 2-1/2 X 1	319838
3 X 3 X 3/4	259066
3 X 3/4 X 3	307950



Male Adapters	
Size	Fig. No.
C X M 1/2	199266
C X M 3/4	199269
C X M 1	199272
C X M 1 1/4	199276
C X M 1 1/2	199281
C X M 2	199292
C X M 2 1/2	245389
C X M 3	245390
C X M 4	245391
C X M 1/2 X 3/8	199267
C X M 1/2 X 3/4	199268
C X M 3/4 X 1/2	199270
C X M 1 X 3/4	199273
C X M 1 X 1 1/4	199274
C X M 1 1/4 X 1	199279
C X M 1 1/4 X 1 1/2	199280
C X M 1 1/2 X 1 1/4	199288

Reducing elbows, long-turn elbows and certain specialty items also available.



90° Street Elbows	
Size	Fig. No.
1/2	199318
3/4	199320
1	199325
1 1/4	199326
1 1/2	199327
2	199328
2 1/2	245403
3	245404
4	245405



45° Street Elbows	
Size	Fig. No.
1/2	199302
3/4	199303
1	199304
1 1/4	199305
1 1/2	199306
2	199307
2 1/2	245395
3	245396
4	245398



Flanges are available 2" - 4", 125 lb. rating and 150 lb. rating.

Don't forget to order nuts & bolts and gaskets.

\*When calling a tee, read the run first, large-to-small, and then the branch.

Many, many other reducing tees available through 4".



Female Adapters	
Size	Fig. No.
C X F 1/2	199249
C X F 3/4	199252
C X F 1	199254
C X F 1 1/4	199258
C X F 1 1/2	199260
C X F 2	199263
C X F 1/2 X 3/8	199250
C X F 1/2 X 3/4	199251
C X F 3/4 X 1/2	199253
C X F 1 X 1/2	199255
C X F 1 X 3/4	199256
C X F 1 X 1 1/4	199257
C X F 1 1/4 X 1/2	--
C X F 1 1/4 X 1	199259
C X F 1 1/4 X 1 1/2	199261
C X F 1 1/2 X 3/4	--
C X F 1 1/2 X 1 1/4	199262

**DUFF DELIVERS**



## COPPER PRESS FITTINGS



90° Elbows (C X M)	
Size	Fig. No.
1/2	199418
3/4	199420
3/4 X 1/2	199426
1	199427
1 1/4	199429
1 1/2	199430
2	199431



90° Female Elbows (C X F)	
Size	Fig. No.
1/2	199389
3/4	199392
3/4 X 1/2	199394
1	199408
1 1/4	199409
1 1/2	199410
2	199411



Female Outlet Tees (C X C X F)	
Size	Fig. No.
1/2	199433
3/4	305390
3/4 X 3/4 X 1/2	199436
1 X 1 X 1/2	199437
1 X 1 X 3/4	306182
1 1/4 X 1 1/4 X 1/2	--
1 1/4 X 1 1/4 X 3/4	--
1 1/2 X 1 1/2 X 1/2	199443
1 1/2 X 1 1/2 X 3/4	--
2 X 2 X 1/2	199451
2 X 2 X 3/4	--



Bullhead Tees	
Size	Fig. No.
1/2 x 1/2 X 3/4	199330
1/2 x 1/2 X 1	199483
3/4 x 3/4 X 1	199338
1 X 1 x 1 1/4	199347
1 x 1 x 2	--
1 1/4 x 1 1/4 x 2	--
1 1/2 x 1 1/2 x 2	--
1 1/2 x 1 1/2 x 3	--
2 x 2 x 3	--
2 1/2 x 2 1/2 x 3	--
2 1/2 x 2 1/2 x 4	--

*Stainless Steel & Black Iron fittings available too!*

**These and many other specialty fittings are available:**



Female Street Elbow / Reducer Street Elbows



Female Street Adapters / Reducer Adapters



Reducer Run / Outlet Tees



90° Reducing Elbows



Male Street Adapters / Reducer Adapters



Reducer Outlet Tees



*New press fittings are always coming to market, including Backflow Preventers, Pressure Regulators, Specialty Valves, and on and on....*



**See page 623 for PRESS BALL VALVES.**

**DUFF**  
also carries plastic  
tubing in Black,  
Red, White and Blue —  
available in 150', 500'  
and 1,000' lengths.



**CLEAR POLYETHELENE TUBING**

SIZE	COIL SIZE	FIG NO.
1/4"	100'	17713
1/4"	1000'	48750
5/16"	100'	17714
3/8"	100'	17715
3/8"	1000'	51797
1/2"	100'	17716
5/8"	100'	17718
5/8"	500'	48749
3/4"	100'	44569



**JOHN GUEST FITTINGS**

**Polypropylene Fittings**

The PP Range of inch-size (PP) push-in fittings is offered for tube sizes 1/4" O.D. to 1/2" O.D. The fittings are manufactured in white polypropylene with food grade EPDM O-rings. They have been developed to satisfy the filtered pure water market and wide range of applications.

**Working Pressures and Temperatures**  
Water Max. 150 psi at 70°F (Max. 10 Bar at 20°C)  
Max. 60 psi at 140°F (Max. 4 Bar at 60°C)  
Min. 33°F/1°C

**MALE CONNECTOR** NPTF THREAD



PART NO.	TUBE OD	THREAD NPTF	BAG QTY	BOX QTY
PP010821W	1/4	1/8	10	500
PP010822W	1/4	1/4	10	400
PP010823W	1/4	3/8	10	400
PP011222W	3/8	1/4	10	250
PP011223W	3/8	3/8	10	250
PP011224W	3/8	1/2	10	250
PP011623W	1/2	3/8	10	150
PP011624W	1/2	1/2	10	150

**UNION CONNECTOR**



PART NO.	TUBE OD	BAG QTY	BOX QTY
PP0408W	1/4	10	400
PPM0408W	5/16	10	300
PP0412W	3/8	10	200
PP0416W	1/2	10	100

**PLUG**



PART NO.	STEM OD	BAG QTY	BOX QTY
PP0808W	1/4	10	500
PPM0808W	5/16	10	500
PP0812W	3/8	10	400
PP0816W	1/2	10	300



**UNION TEE**



PART NO.	TUBE OD	BAG QTY	BOX QTY
PP0208W	1/4	10	300
PPM0208W	5/16	10	200
PP0212W	3/8	10	100
PP0216W	1/2	10	80
Blue Collet PP0208W-B	1/4	10	300

**STEM ADAPTER** NPTF THREAD



PART NO.	STEM OD	THREAD NPTF	BAG QTY	BOX QTY
PP050821W	1/4	x 1/8	10	500
PP050822W	1/4	x 1/4	10	500
PP051222W	3/8	x 1/4	10	300
PP051223W	3/8	x 3/8	10	200
PP051623W	1/2	x 3/8	10	250
PP051624W	1/2	x 1/2	10	200

**SWIVEL ELBOW** NPTF THREAD



PART NO.	TUBE OD	THREAD NPTF	BAG QTY	BOX QTY
PP090821W	1/4	x 1/8	10	300
PP090822W	1/4	x 1/4	10	200
PP091222W	3/8	x 1/4	10	100
PP091223W	3/8	x 3/8	10	100

**UNION ELBOW**



PART NO.	TUBE OD	BAG QTY	BOX QTY
PP0308W	1/4	10	400
PPM0308W	5/16	10	300
PP0312W	3/8	10	200
PP0316W	1/2	10	100
Blue Collet PP0308W-B	1/4	10	400

**REDUCER**



PART NO.	STEM OD	TUBE OD	BAG QTY	BOX QTY
PP061208W	3/8	- 1/4	10	400
PP061210W	3/8	- 5/16	10	400
PP061612W	1/2	- 3/8	10	200
PP062008W	5/8	- 1/4	10	200
PP062012W	5/8	- 3/8	10	200
PP062016W	5/8	- 1/2	10	150

**SWIVEL BRANCH TEE** CENTER LEG NPTF THREAD



PART NO.	TUBE OD	THREAD NPTF	BAG QTY	BOX QTY
PP100821W	1/4	x 1/8	10	200
PP100822W	1/4	x 1/4	10	200
PP101222W	3/8	x 1/4	10	100
PP101223W	3/8	x 3/8	10	100



## SWIVEL MALE RUN TEE NPTF THREAD



PART NO.	TUBE OD	THREAD NPTF	BAG QTY	BOX QTY
PP110821W	1/4	x 1/8	10	200
PP110822W	1/4	x 1/4	10	200
PP111222W	3/8	x 1/4	10	100
PP111223W	3/8	x 3/8	10	100

## BULKHEAD UNION



PART NO.	TUBE OD	Mounting Hole Dia.	BAG QTY	BOX QTY
PP1208W	1/4	0.67	10	200
PP1212W	3/8	0.83	10	100
PP1216W	1/2	1.06	5	50

Polypropylene Bulkhead Unions are not intended for submerged use.

## REDUCING BULKHEAD UNION



PART NO.	TUBE OD	TUBE OD	Mounting Hole Dia.	BAG QTY	BOX QTY
PP121208W	3/8	- 1/4	0.83	10	150

Polypropylene Bulkhead Unions are not intended for submerged use.

## REDUCING UNION CONNECTOR



PART NO.	TUBE OD	TUBE OD	BAG QTY	BOX QTY
PP201208W	3/8	- 1/4	10	250
PP201612W	1/2	- 3/8	10	150



## REDUCING ELBOW



PART NO.	TUBE OD	TUBE OD	BAG QTY	BOX QTY
PP211008W	5/16	- 1/4	10	300
PP211208W	3/8	- 1/4	10	200
PP211612W	1/2	- 3/8	10	150

## JOHN GUEST FITTINGS

### PLUG IN ELBOW



PART NO.	STEM OD	TUBE OD	BAG QTY	BOX QTY
PP220808W	1/4	- 1/4	10	500
PPM220808W	5/16	- 5/16	10	400
PP221208W	3/8	- 1/4	10	300
PP221212W	3/8	- 3/8	10	200
PP221616W	1/2	- 1/2	10	150
Blue Collet				
PP221212W-B	3/8	- 3/8	10	200

### TWO WAY DIVIDER



PART NO.	TUBE OD	BAG QTY	BOX QTY
PP2312W	3/8	10	150

### UNEQUAL TWO WAY DIVIDER



PART NO.	TUBE OD INLET	TUBE OD OUTLET	BAG QTY	BOX QTY
PP241208W	3/8	x 1/4	10	200

### TUBE TO HOSE STEM



PART NO.	STEM OD	HOSE ID	BAG QTY	BOX QTY
PP251212W	3/8	- 3/8	10	400
PP251216W	3/8	- 1/2	10	300
PP251612W	1/2	- 3/8	10	300
PP251616W	1/2	- 1/2	10	250

### REDUCING TEE



PART NO.	TUBE OD END	TUBE OD END	TUBE OD BRANCH	BAG QTY	BOX QTY
PP30080812W	1/4	x 1/4	x 3/8	10	150
PP30120812W	3/8	x 1/4	x 3/8	10	150
PP30121208W	3/8	x 3/8	x 1/4	10	150
PP301612W	1/2	x 1/2	x 3/8	10	50

### FIXED TEE ADAPTER



PART NO.	TUBE OD END	TUBE OD END	NPTF BRANCH	BAG QTY	BOX QTY
PP641223W	3/8	x 3/8	x 3/8	10	150

### FAUCET CONNECTOR UNS THREAD



Lead Free

NSF NSF 51 NSF 61



PART NO.	TUBE OD	THREAD UNS	BAG QTY	BOX QTY
PP3208U7W	1/4	x 7/16 - 24	10	400
PP3212U7W	3/8	x 7/16 - 24	10	300

7/16 - 24 UNS = 1/4 Compression Threads

### FEMALE ADAPTER NPTF THREAD



PART NO.	TUBE OD	THREAD NPTF	BAG QTY	BOX QTY
PP450821W	1/4	x 1/8	10	400
PP450822W	1/4	x 1/4	10	200
PP451222W	3/8	x 1/4	10	200
PP451223W	3/8	x 3/8	10	150

NEW

### END CAP



PART NO.	TUBE OD	BAG QTY	BOX QTY
PP4608W	1/4	10	500

### FIXED ELBOW NPTF THREAD



PART NO.	TUBE OD	THREAD NPTF	BAG QTY	BOX QTY
PP480821W	1/4	x 1/8	10	500
PP480822W	1/4	x 1/4	10	400
PP480823W	1/4	x 3/8	10	300
PP481222W	3/8	x 1/4	10	200
PP481223W	3/8	x 3/8	10	200
PP481623W	1/2	x 3/8	10	150

NEW

### THREE WAY DIVIDER



PART NO.	TUBE OD INLET	TUBE OD OUTLET	BAG QTY	BOX QTY
PP491208W	3/8	x 1/4	150	150

### STACKABLE TEE CONNECTOR



PART NO.	TUBE OD INLET	STEM OD	TUBE OD OUTLET	BAG QTY	BOX QTY
PP531212W	3/8	x 3/8	x 3/8	10	150

NEW

### FEMALE CONNECTOR




PART NO.	TUBE OD	UNEF THREAD	BAG QTY	BOX QTY
PP6008U9W	1/4	9/16-24	10	300



POLYPROPYLENE ANGLE STOP ADAPTER VALVES

ANGLE STOP ADAPTER VALVE (CONVERSION THREAD) •

PART NO.	THREAD MALE/ FEMALE NPS	THREAD COMPRESSION	TUBE OD	BAG QTY	BOX QTY
ASVPP5LF	1/2" x	3/8"	1/4"	1	40
ASVPP6LF	1/2" x	3/8" x	3/8"	1	20



ANGLE STOP ADAPTER VALVE •

PART NO.	THREAD MALE COMPRESSION	THREAD FEMALE COMPRESSION	TUBE OD	BAG QTY	BOX QTY
ASVPP1LF	3/8" x	3/8" x	1/4"	1	30
ASVPP2LF	3/8" x	3/8" x	3/8"	1	30



ANGLE STOP ADAPTER VALVE •

PART NO.	THREAD MALE COMPRESSION	FEMALE COMPRESSION	TUBE OD	BAG QTY	BOX QTY
PASVPP1	3/8" x	3/8" x	1/4"	1	25
PASVPP2	3/8" x	3/8" x	3/8"	1	25

ANGLE STOP ADAPTER VALVE (CONVERSION THREAD) •

PART NO.	THREAD MALE/ FEMALE NPS	FEMALE COMPRESSION	TUBE OD	BAG QTY	BOX QTY
PASVPP5	1/2" x	3/8" x	1/4"	1	25
PASVPP6	1/2" x	3/8" x	3/8"	1	25

\*Conversion Adapter can be threaded to either side of the valve to make configurations of 1/2"x1/2" NPS or 3/8"x3/8" Compression.



Working Pressures and Temperatures

Water Max. 150 psi at 70°F (Max. 10 bar at 20°C)  
 Max. 60 psi at 140°F (Max. 4 bar at 60°C)  
 Min. 33°F/1°C

" Polypropylene Shut-Off Valve

The PPSV Range of Shut-Off Valve is offered for tube sizes 1/4" O.D. and 3/8" O.D., produced in polypropylene and fitted with EPDM O-rings. Polypropylene has the advantage of being more chemically resistant than acetal.

The valves are for use with potable water. For use with other potable liquids please contact our Technical Support Department for guidance. The valves are not to be used with compressed air, explosive gases, petroleum spirits and other fuels or for heating systems.

SPEEDFIT TO FEMALE • NPTF THREAD



PART NO.	TUBE OD	THREAD NPTF	BAG QTY	BOX QTY
PPSV451223W	3/8 x	3/8	80	80

Also available in black. Use suffix E.

SPEEDFIT TO MALE • NPTF THREAD




PART NO.	TUBE OD	THREAD NPTF	BAG QTY	BOX QTY
PPSV010822W	1/4 x	1/4	200	200
PPSV011223W	3/8 x	3/8	100	100

SPEEDFIT TO SPEEDFIT •



PART NO.	TUBE OD	BAG QTY	BOX QTY
PPSV040808W	1/4	200	200
PPSV041212W	3/8	80	80

SPEEDFIT TO FEMALE • NPTF THREAD



PART NO.	TUBE OD	THREAD NPTF	BAG QTY	BOX QTY
PPSV500822W	1/4 x	1/4	200	200
PPSV501222W	3/8 x	1/4	100	100



## BLACK CTS JG TWIST & LOCK® FITTINGS



The Black PEI Range of Twist & Lock Fittings is offered in 3/4" and 1" CTS sizes. They have been specifically designed for Water Filtration/Softener Installs; however, they are also suitable for Marine and R.V. applications. The fittings are manufactured from high quality engineered plastic with EPDM O-rings. Speedfit Push-in system is suitable for hot and cold water plumbing applications.

**The Brand Most Trusted by Water Professionals Worldwide**

### UNION COUPLER



PART NO.	SIZE CTS	BAG QTY	BOX QTY
PEI0428E	3/4"	5	25
PEI0436E	1"	1	15

### ELBOW



PART NO.	SIZE CTS	BAG QTY	BOX QTY
PEI0328E	3/4"	5	20
PEI0336E	1"	1	10

### TEE



PART NO.	SIZE CTS	BAG QTY	BOX QTY
PEI0228E	3/4"	2	10
PEI0236E	1"	1	5

### PLUG IN ELBOW



PART NO.	SIZE CTS x STEM	BAG QTY	BOX QTY
PEI222828E	3/4" x 3/4"	5	25
PEI223636E	1" x 1"	10	25

### MALE CONNECTOR



PART NO.	SIZE CTS x NPT	BAG QTY	BOX QTY
PSEI012024E	1/2" x 1/2"	10	80
PSEI012026E	1/2" x 3/4"	5	60
PSEI012826E	3/4" x 3/4"	5	50
PSEI013626E	1" x 3/4"	2	30
PSEI013628E	1" x 1"	2	20

Only to be used with mating plastic threads.

### MALE STEM ADAPTER



PART NO.	SIZE CTS x NPT	BAG QTY	BOX QTY
PSEI052826E	3/4" x 3/4"	10	60
PSEI053628E	1" x 1"	10	40

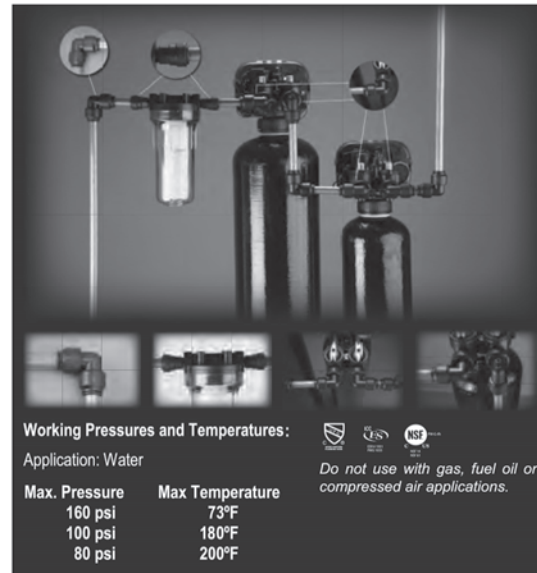
Only to be used with mating plastic threads.

### NEW SHUT-OFF VALVE



PART NO.	SIZE CTS x CTS	BAG QTY	BOX QTY
PSEISV28EP	3/4"	1	75

Firm 1/4 turn handle, prevents unwanted movement. Includes indicator arrow showing off position and 2 interchangeable buttons for color coding hot and cold water.



Working Pressures and Temperatures:

Application: Water

Max. Pressure	Max Temperature
160 psi	73°F
100 psi	180°F
80 psi	200°F



Do not use with gas, fuel oil or compressed air applications.

### MALE FIXED ELBOW



PART NO.	SIZE CTS x NPT	BAG QTY	BOX QTY
PSEI482024E	1/2" x 1/2"	5	60

Only to be used with mating plastic threads.

### NEW FEMALE CONNECTOR



PART NO.	SIZE CTS x NPS	BAG QTY	BOX QTY
PSEI622036E-L	1/2" x 3/4"	2	150
PSEI622836E-L	3/4" x 3/4"	2	150
PSEI622838E-L	3/4" x 1"	2	150
PSEI623638E-L	1" x 1"	2	60
PSEI62363AE-L	1" x 1 1/4"	1	60

Hand tighten only for plastic mating threads.

### NEW FEMALE ELBOW CONNECTOR



PART NO.	SIZE CTS x NPS	BAG QTY	BOX QTY
PSEI632836E-L	3/4" x 3/4"	2	150
PSEI632838E-L	3/4" x 1"	1	100
PSEI63283AE-L	3/4" x 1 1/4"	1	60
PSEI63363AE-L	1" x 1 1/4"	1	50

Hand tighten only for plastic mating threads.

### STEM ELBOW



PART NO.	SIZE CTS x STEM
*	3/4" x 1 1/4"

### STEM CONNECTOR



PART NO.	SIZE CTS x STEM
*	1" x 1 1/4"

\*Available through Clack Distributors.

### REDUCER COUPLER



PART NO.	SIZE CTS	BAG QTY	BOX QTY
PEI203628E	1" x 3/4"	5	15

NYLON COMPRESSION FITTINGS

**MALE CONNECTORS**



FIG. NO.	TUBE O.D.	PIPE THRD	PRICE
3559	1/8	1/8	
3564	1/4	1/8	
3565	1/4	1/4	
3567	1/4	3/8	
47104	5/16	1/8	
3569	5/16	1/4	
22282	3/8	1/8	
3570	3/8	1/4	
3571	3/8	3/8	
47105	3/8	1/2	
29583	1/2	1/8	
29584	1/2	1/4	
3572	1/2	3/8	
3575	1/2	1/2	
24097	5/8	3/8	
3576	5/8	1/2	
3577	3/4	1/2	
29585	3/4	3/4	
47106	7/8	3/4	

**FEMALE CONNECTORS**



FIG. NO.	TUBE O.D.	PIPE THRD	PRICE
29617	1/4	1/8	
29618	1/4	1/4	
29619	5/16	1/4	
29620	3/8	1/4	
29621	3/8	3/8	
29622	1/2	3/8	
29624	1/2	1/2	
29625	5/8	1/2	

**MALE ELBOWS**



FIG. NO.	TUBE O.D.	PIPE THRD	100 PACK FIG NO.
3589	1/8	1/8	
42455	1/4	1/8	
3590	1/4	1/4	
3592	1/4	3/8	
3593	5/16	1/4	
3596	3/8	1/4	328807
3599	3/8	3/8	
3600	1/2	3/8	
3604	1/2	1/2	
48970	5/8	3/8	
3606	5/8	1/2	

**UNION & REDUCING UNION CONNECTORS**



FIG. NO.	TUBE O.D.	100 PACK FIG NO.
3579	1/4	
29587	5/16	
3581	3/8	
3583	1/2	328805
3585	5/8	
29588	5/16-1/4	
29589	3/8-1/4	
29590	1/2-3/8	
88505	5/8-1/2	328806

**FEMALE ELBOWS**

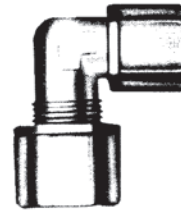


FIG. NO.	TUBE O.D.	PIPE THRD	PRICE
29602	1/8	1/4	
29603	1/4	1/8	
29604	1/4	1/4	
29605	5/16	1/4	
29606	3/8	1/4	
29608	3/8	3/8	
29609	1/2	3/8	
29610	1/2	1/2	
29611	5/8	1/2	

**BULK HEAD UNIONS**

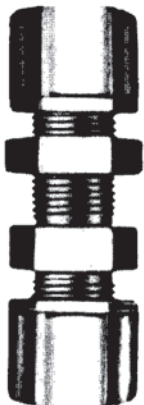


FIG. NO.	TUBE O.D.	PRICE
29612	1/4	
29613	5/16	
29614	3/8	
29615	1/2	
29616	3/4	

**UNION ELBOWS**

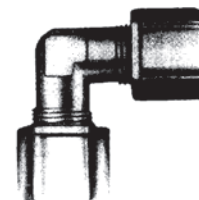


FIG. NO.	TUBE O.D.	PRICE
3609	1/4	
29591	5/16	
3611	3/8	
3612	1/2	
3614	5/8	

## NYLON COMPRESSION FITTINGS

### MALE BRANCH TEES

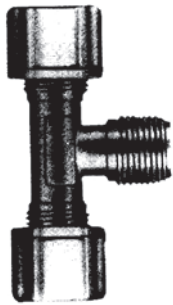


FIG. NO.	TUBE O.D.	PIPE THRD
17463	1/4"	1/8"
3616	1/4"	1/4"
29592	5/16"	1/4"
3617	3/8"	1/4"
3619	3/8"	3/8"
3621	1/2"	3/8"
3622	1/2"	1/2"
3623	5/8"	1/2"

### UNION TEES

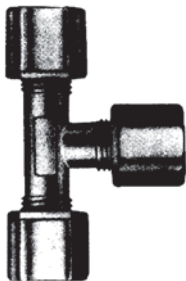


FIG. NO.	TUBE O.D.	100 PACK FIG. NO.
3626	1/8"	—
3628	1/4"	328804
3630	5/16"	—
3631	3/8"	328803
3635	1/2"	—
3638	5/8"	—
29593	1/2"	—

### MALE RUN TEES

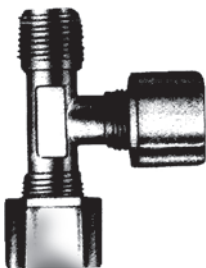


FIG. NO.	TUBE O.D.	PIPE THRD
29594	1/4"	1/8"
29595	1/4"	1/4"
29596	5/16"	1/4"
29597	3/8"	1/4"
29598	3/8"	3/8"
29599	1/2"	3/8"
29600	1/2"	1/2"
29601	5/8"	1/2"

### INSERT



FIG. NO.	TUBE O.D.
3675	1/4
3678	5/16
3682	3/8
3685	1/2

### NYLON COMPRESSION NUTS WITH SLEEVE



FIG. NO.	TUBE O.D.
3639	1/8"
3641	1/4"
3642	5/16"
3644	3/8"
3647	1/2"

### NYLON COMPRESSION NUTS WITH STAINLESS STEEL GRIPPER



FIG. NO.	TUBE O.D.
3639	1/8"
3641	1/4"
3642	5/16"
3644	3/8"
3647	1/2"

### NYLON COMPRESSION NUTS WITH STAINLESS STEEL GRIPPER

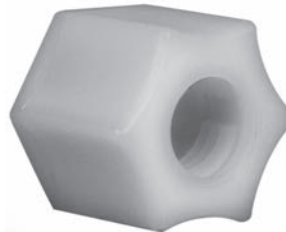


FIG. NO.	TUBE O.D.
PG-4	1/4"
3654	5/16"
3660	3/8"
3663	1/2"
64617	5/8"
3670	3/4"

**GOT QUESTIONS?**  
Call your DUFF rep  
to get the right  
solution.



est. 1947

# DUFF CO.

When you need it now... or don't know how

OVER  
**65**  
YEARS OF  
SERVICE

# How to Order

Submit your order online

or

email [info@duffco.com](mailto:info@duffco.com)

**Be sure to include**

product numbers

descriptions

quantities

**Don't forget to include your name!**

# DUFF SUPPLY COMPANY

WATER TREATMENT EQUIPMENT - PUMPS - PLUMBING - HEATING - INDUSTRIAL SUPPLIES - PUMPS  
 STEAM SPECIALTIES - PIPE - VALVES - FITTINGS - SOFTENERS - FILTERS

201 EAST LAFAYETTE STREET, P.O. BOX 618, NORRISTOWN, PA 19401  
 PHONE: 610-275-4453 FAX: 610-279-6299



SOLD TO:

SHIP TO:


YOUR NAME: \_\_\_\_\_ PURCHASE ORDER NO. \_\_\_\_\_

TODAY'S DATE: \_\_\_\_\_ REQUIRED DATE: \_\_\_\_\_

QTY	FIG. NO.	DESCRIPTION	PRICE/EA	TOTAL



Products for Quality Water

TERMS: NET - 10<sup>TH</sup> OF MONTH FOLLOWING PURCHASE  
 WE WILL PREPAY AND ADD FREIGHT FOR ALL ORDERS SHIPPED UPS OR COMMON CARRIER

*All accounts are to be paid in full to Duff Supply Company monthly by the tenth (10<sup>th</sup>) day of the month following invoice date, a 1% service charge and a 1% interest charge will be made on any balance open at the end of the month following invoice, and in the event that legal action or lien be undertaken, or the service of a collection agency are used to collect this account, the customer shall pay all expenses incurred by Duff Supply Company, such as, but not limited to, costs and collection, legal and lien fees.*

QTY	FIG. NO.	DESCRIPTION	PRICE/EA	TOTAL

*Thank You  
for your business!*



Contact name \_\_\_\_\_ Contact Date \_\_\_\_\_

	<h2 style="margin: 0;">DUFF COMPANY</h2> <p style="margin: 0;">201 East Lafayette Street Norristown, PA 19401</p> <p style="margin: 0;">Phone: <b>610-275-4453</b> Fax: <b>610-279-6761</b></p>	
---	---	---

Legal Name \_\_\_\_\_

Name in which business is conducted \_\_\_\_\_

Billing Address \_\_\_\_\_

City \_\_\_\_\_ State \_\_\_\_\_ Zip \_\_\_\_\_

Purchasing Phone \_\_\_\_\_ A/P Phone \_\_\_\_\_ Fax \_\_\_\_\_



Principal's Name \_\_\_\_\_

Principal's Address \_\_\_\_\_

City \_\_\_\_\_ State \_\_\_\_\_ Zip \_\_\_\_\_

Phone (Office) \_\_\_\_\_ (Cell) \_\_\_\_\_ E-mail address \_\_\_\_\_

Website address (If applicable) \_\_\_\_\_

Primary Contact \_\_\_\_\_ Title \_\_\_\_\_



**SHIPPING ADDRESS - IF DIFFERENT**

Shipping Address \_\_\_\_\_ Phone \_\_\_\_\_

City \_\_\_\_\_ State \_\_\_\_\_ Zip \_\_\_\_\_

Tax Exempt Number \_\_\_\_\_ Provide a copy of Certificate. We CAN NOT set up a Tax Exempt Account without certification.



**TYPE OF BUSINESS**

Plumbing \_\_\_\_\_ Pumps \_\_\_\_\_ Heating \_\_\_\_\_ Municipality \_\_\_\_\_ Hotel or Apts. \_\_\_\_\_ Well Drilling \_\_\_\_\_  
 Hospital \_\_\_\_\_ Factory (OEM) \_\_\_\_\_ Factory (Mtn) \_\_\_\_\_ Office Building \_\_\_\_\_ Shopping Center \_\_\_\_\_  
 Golf Course \_\_\_\_\_ Water Treatment \_\_\_\_\_ Environmental \_\_\_\_\_ Other (Please name) \_\_\_\_\_

Have you been contacted by one of our salesman? \_\_\_\_\_ Name \_\_\_\_\_

If YES, please explain \_\_\_\_\_

Name of person authorized to pick up \_\_\_\_\_

D&B Rating \_\_\_\_\_ Check one: Corporation \_\_\_\_\_ Partnership \_\_\_\_\_ Individual Proprietor \_\_\_\_\_

If division of another company, name parent company and relationship \_\_\_\_\_



# DUFF COMPANY

201 East Lafayette Street, Norristown, PA 19401

## TRADE REFERENCES

Name \_\_\_\_\_ Type of business \_\_\_\_\_

Address \_\_\_\_\_

City \_\_\_\_\_ State \_\_\_\_\_ Zip \_\_\_\_\_

Phone \_\_\_\_\_ Fax \_\_\_\_\_



Name \_\_\_\_\_ Type of business \_\_\_\_\_

Address \_\_\_\_\_

City \_\_\_\_\_ State \_\_\_\_\_ Zip \_\_\_\_\_

Phone \_\_\_\_\_ Fax \_\_\_\_\_



Name \_\_\_\_\_ Type of business \_\_\_\_\_

Address \_\_\_\_\_

City \_\_\_\_\_ State \_\_\_\_\_ Zip \_\_\_\_\_

Phone \_\_\_\_\_ Fax \_\_\_\_\_



Bank reference \_\_\_\_\_

Branch Address \_\_\_\_\_

City \_\_\_\_\_ State \_\_\_\_\_ Zip \_\_\_\_\_

Branch officer who handles account \_\_\_\_\_

In consideration of your opening the above account and/or extended credit, the undersigned hereby agrees that all information supplied in this application is correct, that all accounts are to be paid in full to Duff Company monthly by the tenth day of the month following the invoice date, that a 1% service charge and a 1% interest charge will be made an any balance open at the end of the month following invoice date, and that in the event that legal action or lien be taken, or the service of a collection agency are used to collect this account, the undersigned shall pay all expenses incurred by the Duff company, such as, but not limited to, collection fees, costs and legal fees.

Applicant (Name of Account) \_\_\_\_\_

By \_\_\_\_\_ Title \_\_\_\_\_

The undersigned \_\_\_\_\_ and \_\_\_\_\_ for good and valuable consideration, hereby jointly, severally and personally unconditionally guarantee, warrant and promise the full and prompt (within terms) payments of all bills and other obligations (as set forth above) of the applicate in connection with any credit extended to the applicant by Duff Company.\*

Principal \_\_\_\_\_ Witness \_\_\_\_\_ Principal's Spouse \_\_\_\_\_ Witness \_\_\_\_\_

Principal \_\_\_\_\_ Witness \_\_\_\_\_ Principal's Spouse \_\_\_\_\_ Witness \_\_\_\_\_

We routinely fax invoices to our customers. Please provide a fax number where we can send invoices \_\_\_\_\_

**PLEASE FAX FORM TO 610-275-6761**

\*As appropriate, we may also require the guarantee of a principal and, in some cases, the principal's spouse.

### For Duff Company Use Only

Credit Limit: _____	Contact: _____	Certificate Recd: _____
Tax Jurisdiction: _____	General Manager _____	Type: _____
Salesman: _____	Class: _____	Controller: _____
	Date Approved: _____	